

Dott. Arch. Giovanni Parlanti  
Progettista

Dott. Arch. Gabriele Banchetti  
Valutazione Ambientale Strategica

Dott. Pian. Jr Emanuele Bechelli  
Elaborazione grafica e GIS

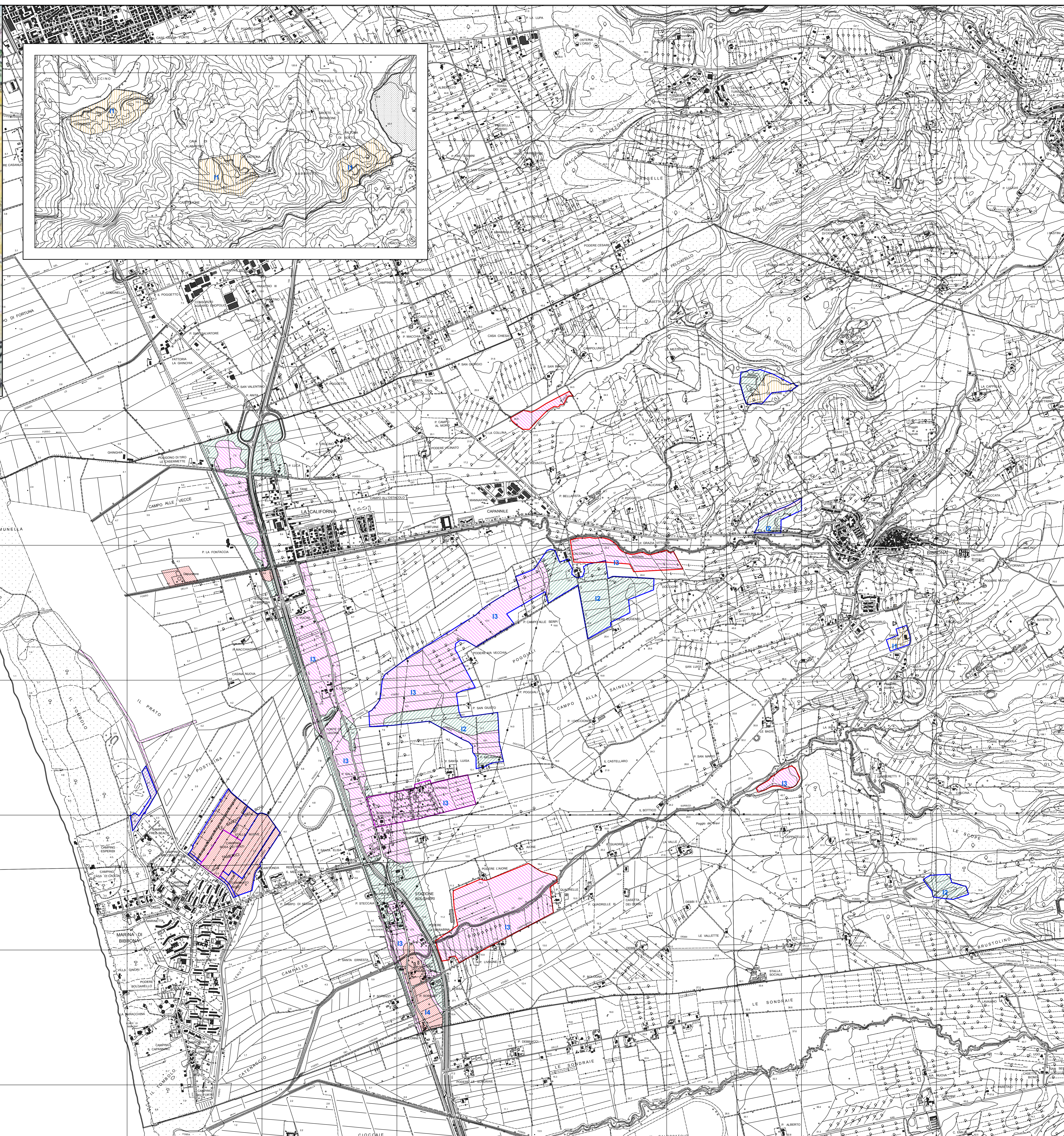
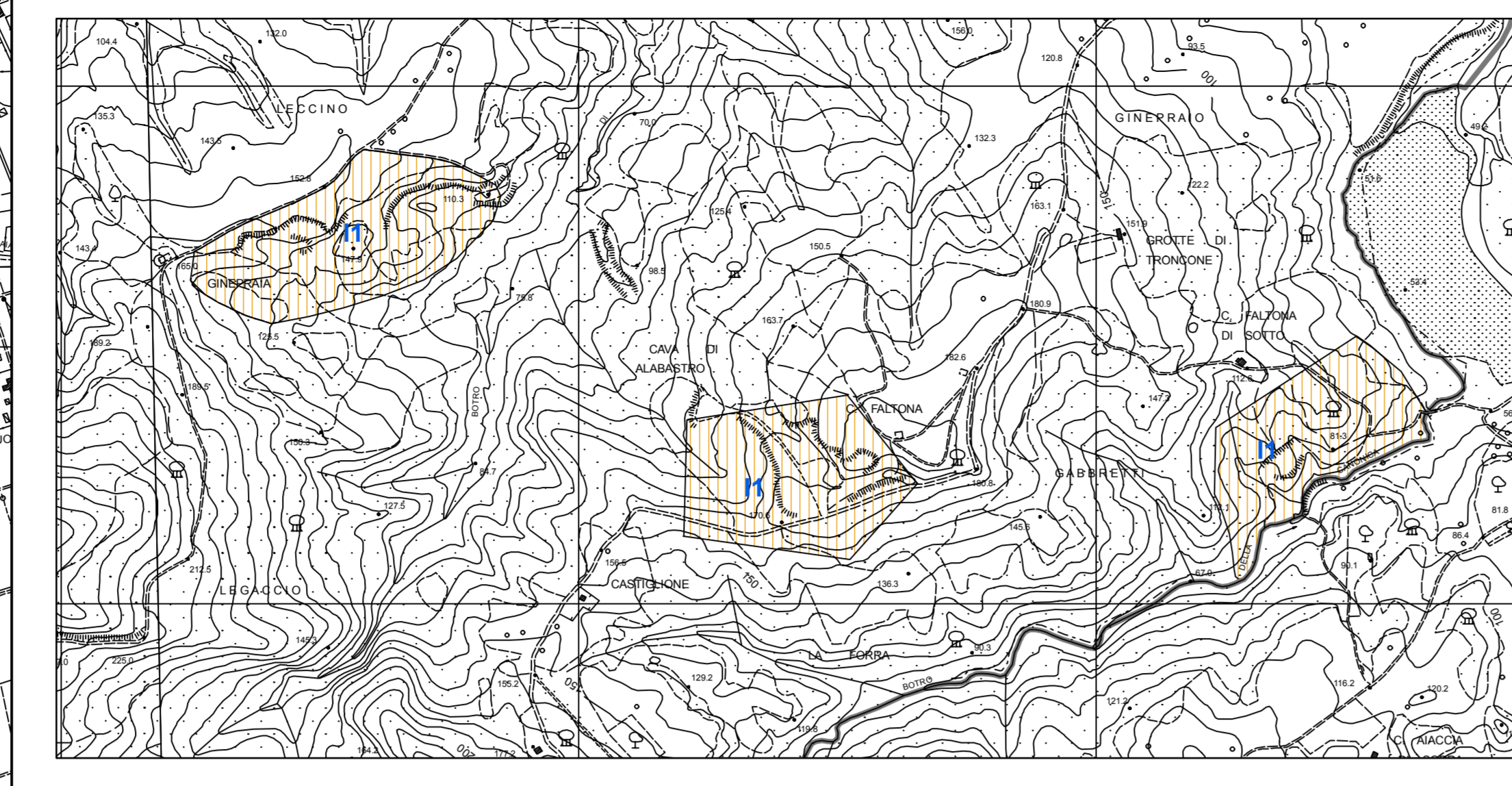
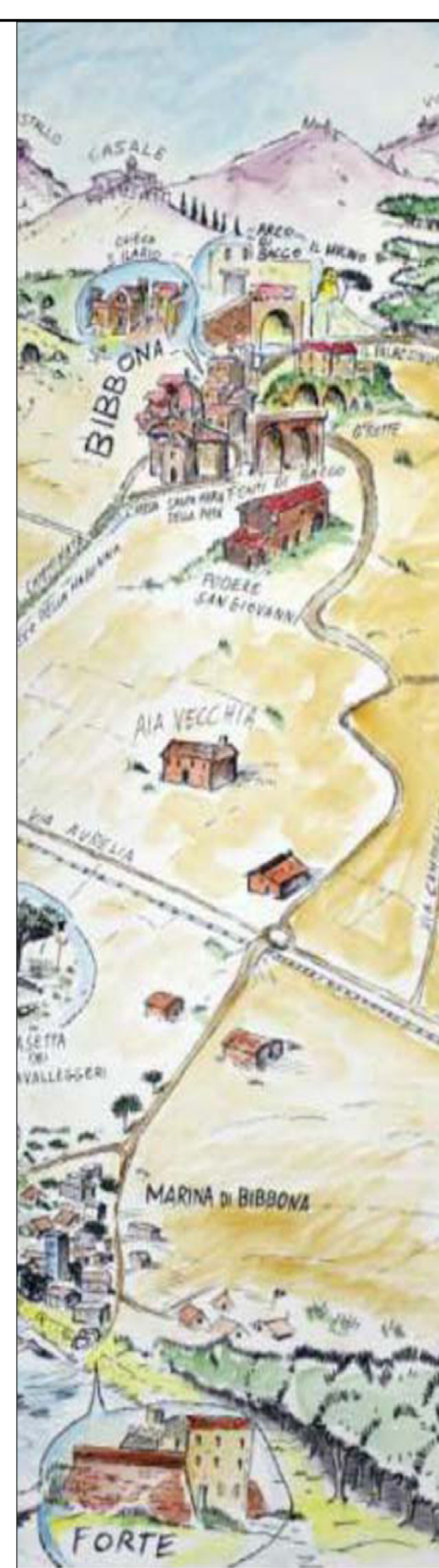
D.R.E.Am. Italia Soc. Coop.  
Dott. Geol. Leonardo Moretti  
Dott. Geol. Roberto Giannini  
Dott. Ing. Silvia Cipriani  
Studi geologici e idraulici  
Dott. Francesco Scaglione  
Sistema informativo geografico

Geom. Sandro Cerri  
Responsabile del procedimento

Fiorella Marini  
Sindaco


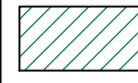
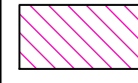
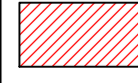




Tavola  
G.Pr.2 - CARTA DI FATTIBILITA'  
PER FATTORI IDRAULICI  
(Aree extraurbane)  
Scala 1:10.000

Marzo 2014



**LEGENDA**

**Fattibilità per fattori idraulici**

-  F1.1 Fattibilità senza particolari limitazioni
-  F1.2 Fattibilità con normali vincoli
-  F1.3 Fattibilità condizionata
-  F1.4 Fattibilità limitata
-  Casse di laminazione
-  Limite di comparto
-  Limite di campeggio
-  Confine comunale